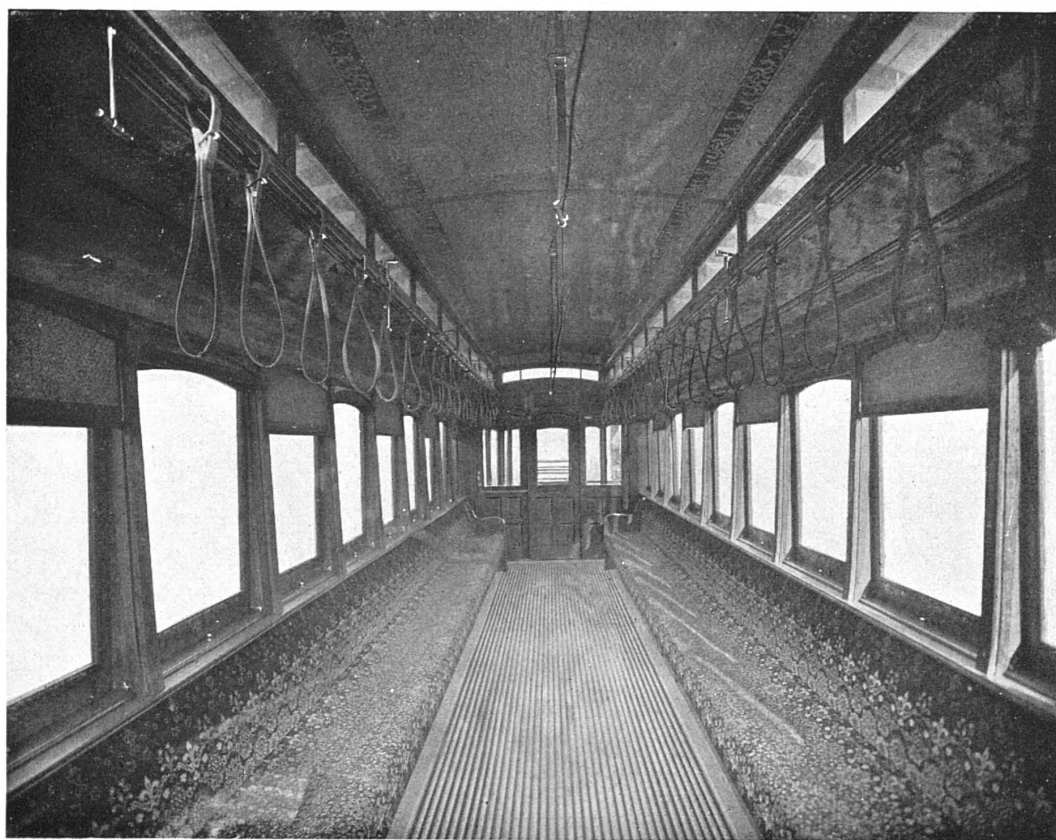


Pay-As-You-Enter Cars for Columbus, Ohio

The Pay-As-You-Enter car continues to meet with approval, Columbus, Ohio, being the latest city in which they have been introduced. Ten cars, built by the G. C. Kuhlman Car Company, were placed in service by the Columbus Railway & Light Company on December 1, and according to reports were an immediate success.

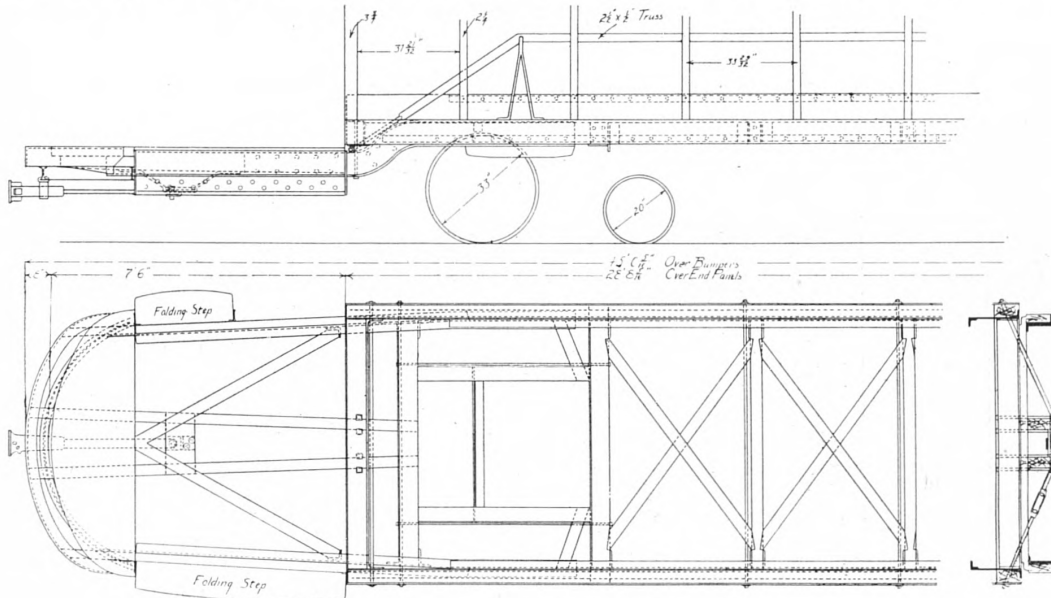
The Columbus cars are 28'8" long over the end panels, and are similar to the P-A-Y-E cars for Portland, which were described in the October number of *Brill's Magazine*. As the cars are



PAY-AS-YOU-ENTER CARS FOR COLUMBUS, OHIO — The Longitudinal Seats
Give Ample Aisles and Standing Room

double-enders, both vestibules are the same. They are 7' long inside. The length of the cars over the vestibules is 43'8", and over bumpers 45'4." The other principal dimensions are as follows: Width over sills, 7'2"; width over body above rail, 8'; height from bottom of sill to top of roof, 9'.

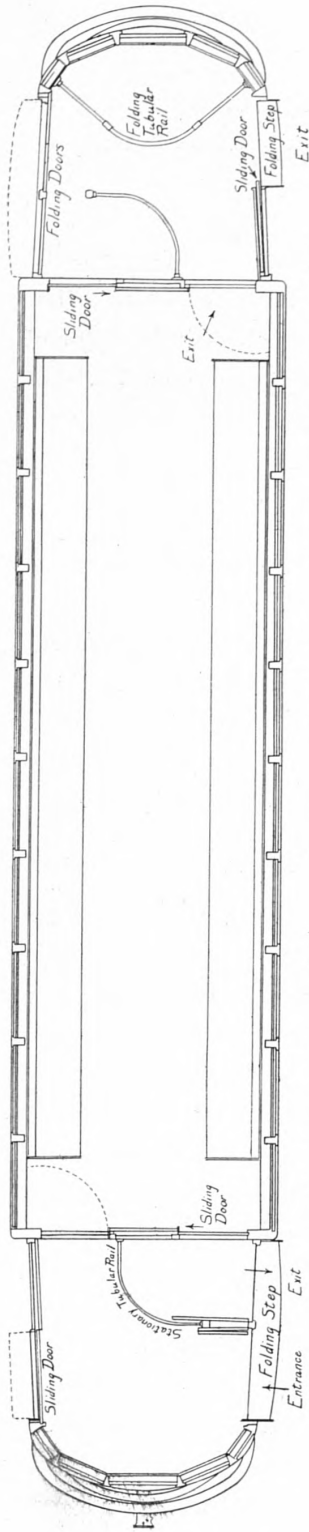
The side sills used in the bottom framing are 4" x 7½", and are plated with 15½" x ⅜" sill plates reinforced at the edge with 2½" x 2½" angle iron. There are no center or intermediate sills, as the side sill construction, with the steel plate reinforcement and the deep truss, is amply strong to carry both the weight of the car



PAY-AS-YOU-ENTER CARS FOR COLUMBUS, OHIO—Framing Plan

body and the live load, as well as any buffing strains which may occur. The underframe construction is shown in an accompanying plan. The crossings and diagonals are all of white oak, and are held in place in sockets, formed by channels and angles, which are riveted to the side plates before they are attached to the wooden sills. The end sill and the crossing next to it are both plated with 6" x ½" plate and the entire underframing is reinforced with frequent tie-rods, which are indicated in the plan. A substantial truss, which is also shown, is employed under the end sills.

The officials of the Columbus Railway & Light Company employed space liberally in all of the local dailies, including a Ger-

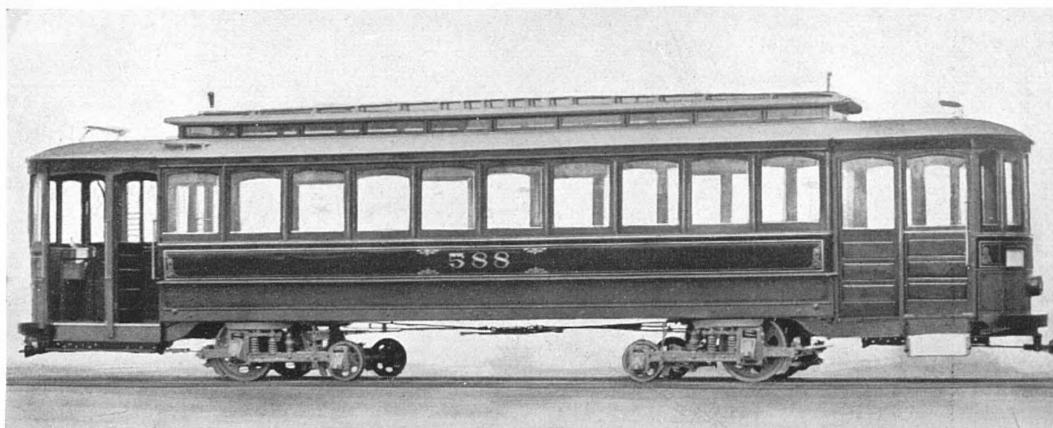


PAY-AS-YOU-ENTER CARS FOR COLUMBUS, OHIO — The Folding Platform Doors Complete the Rail which Separates the Passengers Entering from Those Leaving the Car

man newspaper, and also distributed leaflets describing the cars. The manner in which the cars were received is indicated in a letter from Mr. L. G. White, general superintendent, written on December 4, from which the following is extracted: "The Pay-As-You-Enter cars furnished us by the Kuhlman Car Company were placed in operation upon our State and Oak line, on December 1. The cars started out and have run without a hitch of any kind up to date. Our passengers are very much pleased with the new cars and we have received many gratifying notices in the various newspapers in the city. So far as the company is concerned, I would say that everyone has expressed entire satisfaction not only with the cars but with their operation and reception which the public has accorded them.

"I desire to compliment The J. G. Brill Company on the workmanship and material used in the construction of these cars. A number of railway men, who are competent to judge material and workmanship of cars, have visited us since these cars were installed, and without exception their expressions have been highly complimentary. Personally, I can say that they are the best constructed and finest cars that this company has ever received.

"Relative to the public, would say that our passengers took to the Pay-As-You-Enter system as though they had always been accustomed to it, and in spite of the fact that the traffic was a great deal heavier, because of the novelty of the new car, we did not have a single case of misunderstanding or trouble because of the new



PAY-AS-YOU-ENTER CAR FOR COLUMBUS, OHIO — Mounted on Brill "Eureka"
Maximum Traction Trucks

system. The public seemed to appreciate the fact that the new car affords a greater degree of comfort and saves time in transportation, as well as affording a much greater degree of safety to them, and these are all things that the public has long desired."